



PATIENT SUPPORT

Emergency card for patients with PID

BEGINNER

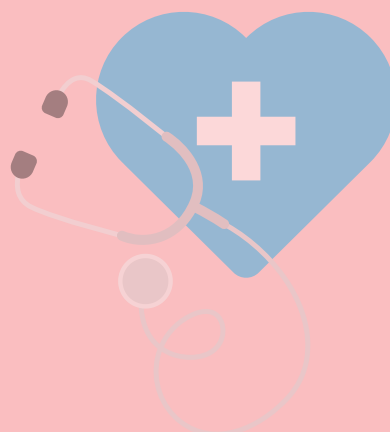
→ FOR PATIENTS WITH PRIMARY IMMUNODEFICIENCY (PID), EMERGENCY SITUATIONS CAN BE PARTICULARLY CHALLENGING. IPOPI'S 4 ID APP PROVIDES A VALUABLE TOOL: AN EMERGENCY CARD. THIS CARD HELPS THAT CRUCIAL PID INFORMATION IS COMMUNICATED EFFECTIVELY TO MEDICAL PROFESSIONALS DURING EMERGENCIES.

OBJECTIVES:

- **Facilitate clear communication:** Offer PID and treatment information to medical staff who may not be familiar with the PID patient's condition.
- **Ensure accurate treatment:** Provide essential information to prevent treatment errors in urgent situations.
- **Accessibility:** Allow updates and export of the Emergency Card as needed.

ADVANTAGES:

- **Quick access to information:** Essential medical details like allergies and medications are readily available for emergencies.
- **Emergency contacts:** Includes contact info for family or caregivers for quick communication during crises.
- **Peace of mind:** Ensures vital health information is accessible, reducing anxiety for patients and their families.
- **Useful for travel:** Offers essential information to unfamiliar medical personnel when traveling or away from primary care.



Emergency card for patients with PID



STEP BY STEP:

1

ACCESS IPOPI'S 4 ID

- Access [IPOPI's 4 ID Web App here](#) and create an account

2

ENTER DETAILS IN THE EMERGENCY CARD WITH YOUR PHYSICIAN

- **PID Details:** Specify the name and description of the PID.
- **Instructions:** Provide clear instructions for managing the PID.
- **Medical Contacts:** List contacts who can provide additional information about the condition, should they have any questions during the emergency situation
- **Emergency Contacts:** Include family members or friends who can assist at the hospital.
- **Treatment List:** Detail the treatment regimen and dosages.
- **Doctor's Note:** Include a section where the doctor can add any other relevant information.

NOTE: ALTHOUGH THE 4-ID WEB APP IS IN ENGLISH,
DETAILS CAN BE ENTERED IN THE PATIENT'S PREFERRED LANGUAGE.

3

SAVE AND SHARE

- **Save your Emergency Card:** Store your details in the app and export or email the card for easy access.
- **Keep a printed copy:** In addition to the digital version, keep a printed copy of the Emergency Card in your wallet or purse in case your phone is not accessible.
- **Share with your network:** Share the Emergency Card with your family or close friends so they are familiar with it in case of an emergency.

Emergency card for patients with PID



STEP BY STEP:

4

UPDATE REGULARLY

- Review and update the Emergency Card periodically, especially after any changes in treatment or contact information.

BY PREPARING AND UTILISING THIS EMERGENCY CARD, PID PATIENTS CAN ENSURE THEY RECEIVE APPROPRIATE CARE DURING EMERGENCIES AND REDUCE THE RISK OF TREATMENT ERRORS.

TIP

- Share this tool with PID patients in your country to enhance their emergency preparedness!